

DARWIN and KAKADU NATIONAL PARK
5Days-4Nights & 4Days-3Nights

Minimum 2 Persons

Validity: 01OCTOBER 2014-31MARCH 2015

TOUR REF: 5D-4N PAK/SG/14/2145/2608 & 4D-3N PAK/SG/14/2144/2608





DARWIN 5DAYS-4NIGHTS

Day 01 SINGAPORE/DARWIN (WED & FRI)

Depart Singapore to Darwin via MI801 (include Pre Registered room on day 01.early check-in)

Day 02 DARWIN (BKF)

Arrive Darwin at 01h50, you will be transfer by SIC airport shuttle to hotel for check in rest and relax. A day free at own leisure for you to explore Darwin and its surrounding area. You may visit Crocosaurus Caves on Mitchel Street (Entry is NOT included)

. After lunch join the famous Yellow Water Billabong Cruise to observe saltwater crocodiles and the colourful range of prolific bird life that this region is renowned for. Visit the Warradjan Aboriginal Cultural Centre and view the informative displays and exhibits depicting the traditions of the Aboriginal people. There is the opportunity for an optional 50 minute scenic flight (own expense)

Overnight at Kakadu National Park-Aurora Kakadu (Standard Superior Room)



Day 03 DARWIN/KAKADU NATIONAL PARK (BKF/LCH)

Travel across Adelaide River and Murrumbidgee Plains and deep into Kakadu National Park. Take a guided walk to view ancient Aboriginal rock art at Nourlangie Rock.





Day 04 KAKADU NATIONAL PARK/DARWIN (BKF/LCH)

Enjoy your breakfast at hotel

This morning stop at Ubirr with a short walk to view rock art. Join the Guluyambi Cruise along the East Alligator River in search of saltwater Crocodiles. We have an Aboriginal guide and with the special permission of the local people, we will be able to go ashore in Arnhem Land. Visit the Bowali Visitor Centre. Then return journey back to Darwin. Check in hotel rest and relax

NOTE: During the months November to April, access to Ubirr and East Alligator River is not always possible. Alternative touring will be arranged.

The Park encloses much of the spectacular Tabletop Range, which is a wide sandstone plateau mostly surrounded by cliffs. During the green season four major waterfalls thunder from the cliffs to tropical rock pools many meters below. During the dry season, the waterfalls flow more gently, making the waterholes perfect spots for a cool dip. The Park traditional owners are the Wagait Aboriginal people, many of whom live in the area.

We follow the Stuart Highway via the township of Batchelor to Litchfield National Park where we will visit the main falls. First stop is Florence Falls, where you have the opportunity for a scenic and interpretive bush and monsoon vine forest walk. There is also chance for a swim by making your way down the stairs to the plunge pool below. Travel on to Tolmer Falls for a magnificent view of the water cascading down to the deep waterhole at the base of the falls. Finally we visit Wangi Falls, with its large crystal pool, another relaxing spot for a swim. A great day for taking many fascinating photos, including the amazing stand of termite mounds. A picnic lunch is included. Then return back to Darwin at around 6 pm.

Free at own leisure until late evening you will be taken to Darwin airport for your departure flight via MI802 ETD02h50



Day 05 DARWIN DEPARTURE (BKF) (SUN & TUE)

Enjoy your breakfast in hotel and check out formalities. Leave your luggage at the hotel Concierge and you will pick up from hotel for **LITCHFIELD NATIONAL PARK** tour.

Litchfield national Park contains several types of typical Top End habitats including lush monsoon forests, termite mounds, unusual rock formations, waterfalls and cascades.





"I think the luxury of this country is space"
Marlee Ranacher, Owner Bullo River Station

DARWIN 4DAYS-3NIGHTS

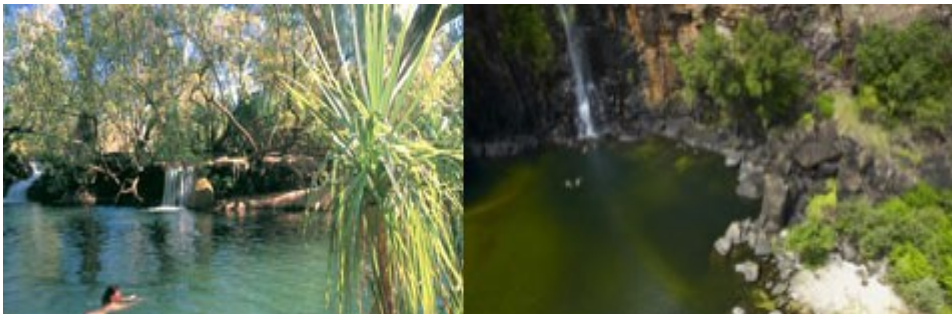
Day 01 SINGAPORE/DARWIN (WED & SUN)

Depart Singapore to Darwin via M1801 (include Pre Registered room on day 01.early check-in)

Day 02 DARWIN (BKF) (MON/WED/FRI)

Arrive Darwin at 01h50, you will be transfer by SIC airport shuttle to hotel for check in rest and relax. A day free at own leisure for you to explore Darwin and its surrounding area.

You may visit Crocosaurus Caves on Mitchel Street (Entry is NOT included)



Day 03 DARWIN (BKF/LCH)

Enjoy your breakfast in hotel

This morning you will pick up from hotel for a **Full Day KAKADU NATIONAL PARK (TOUR CODE D4 DEP:6.30AM & RET:7.30PM)**

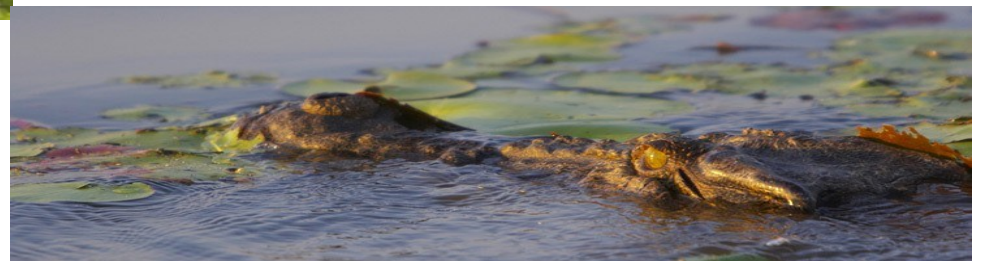
Kakadu National Park is a timeless place- a landscape of exceptional beauty and diversity.

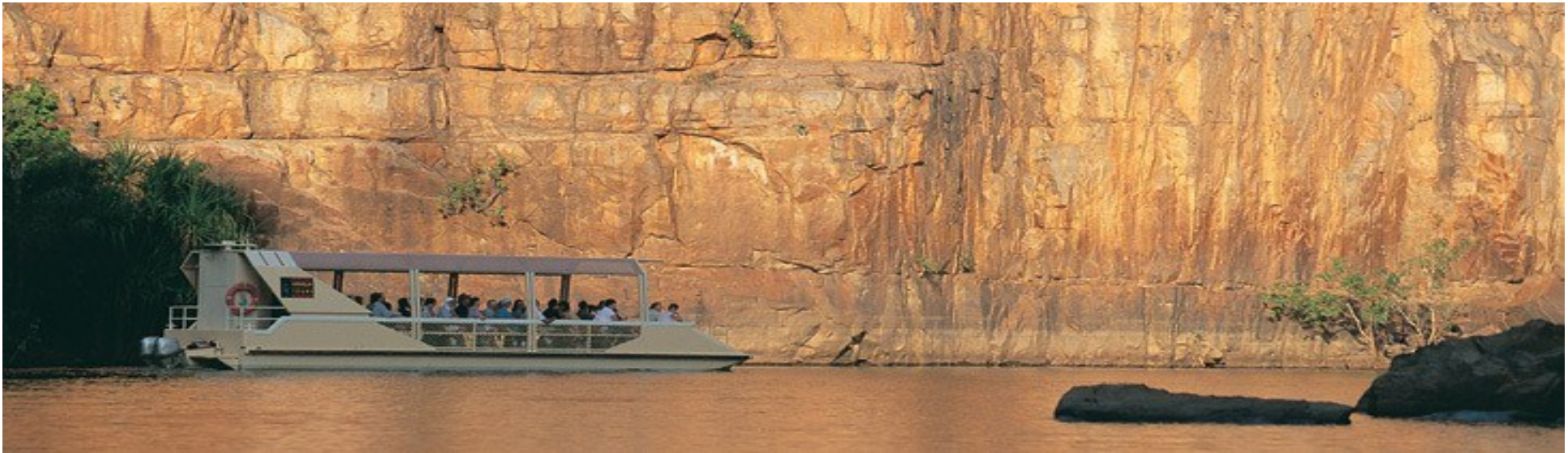
Kakadu National Park is a timeless place- a landscape of exceptional beauty and diversity.

Mangrove fringed coastal area blend into expensive flood plains, lowland hills flanked to the east by sandstone escarpments, all interwoven between various open woodland and forest habitats. Teeming with wildlife in the water, on the land and in the air, there are many species which provide a diversity and concentration seen nowhere else.

The land takes on different forms and different colours with the passing of each season.

Travel across Adelaide River and Marreakai Plains and deep into Kakadu National Park. Stop at Nourlangie Rock, where your guide will lead a walk to view ancient Aboriginal rock art, after lunch we join the local guide for a cruise on the famous Yellow Water Billabong. Search for saltwater crocodiles and the colourful range of birdlife for which this region is renowned. Visit the Warradjan Cultural Centre and view the informative displays depicting the traditions of the Aboriginal people in Kakadu, before returning to Darwin.





Day 04 DARWIN DEPARTURE (B) (SAT & WED)

Enjoy your breakfast in hotel and check out formalities. Leave your luggage at the hotel

Concierge and you will pick up from hotel for **LITCHFIELD NATIONAL PARK** tour.



Litchfield national Park contains several types of typical Top End habitats including lush monsoon forests, termite mounds, unusual rock formations, waterfalls and cascades.

The Park encloses much of the spectacular Tabletop Range, which is a wide sandstone plateau mostly surrounded by cliffs. During the green season four major waterfalls thunder from the cliffs to tropical rock pools many meters below. During the dry season, the waterfalls flow more gently, making the waterholes perfect spots for a cool dip.

The Park traditional owners are the Wagait Aboriginal people, many of whom live in the area.

We follow the Stuart Highway via the township of Batchelor to Litchfield National Park where we will visit the main falls. First stop is Florence Falls, where you have the opportunity for a scenic and interpretive bush and monsoon vine forest walk. There is also chance for a swim by making your way down the stairs to the plunge pool below. Travel on to Tolmer Falls for a magnificent view of the water cascading down to the deep waterhole at the base of the falls. Finally we visit Wangi Falls, with its large crystal pool, another relaxing spot for a swim. A great day for taking many fascinating photos, including the amazing stand of termite mounds. A picnic lunch is included. Then return back to Darwin at around 6 pm.

Free at own leisure until late evening you will be taken to Darwin airport for your departure flight via MI802 ETD02h50





DARWIN & KAKADU NATIONAL PARK

TOUR REF: 4D-3N PAK/SG/14/2144/2608

VALIDITY: 01OCTOBER 2014-31MARCH 2015

VALIDITY 01 OCT 2014-31 MAR 2015	4 Days – 3 Nights DARWIN					
	TWIN	TRIPLE	CHD + 1 ADULT	CHD W/BED	CHD N/BED	SGL SUB
DARWIN CENTRAL HOTEL	AUD767	AUD720	AUD660	AUD552	AUD480	AUD368
TRAVELODGE MIRAMBEENA RESORT	AUD767	AUD710	AUD660	AUD552	AUD480	AUD368
MANTRA ON THE ESPLANADE DARWIN	AUD826	AUD729	AUD710	AUD593	AUD516	AUD336
NOVOTEL ATRIUM DARWIN	AUD850	AUD793	AUD730	AUD610	AUD530	AUD390
MANTRA PANDANAS	AUD882	AUD797	AUD758	AUD633	AUD549	AUD393
HILTON DARWIN	AUD995	AUD892	AUD854	AUD712	AUD617	AUD536



PACKAGE PRICE INCLUDES: (4Days-3Nights)

- 3Nights Hotel Accommodation in Darwin
- Daily Breakfast & other meals as indicated
- Sightseeing Tours as indicated
- Admission fees where applicable
- Return Airport SIC Shuttle Transfer

NOTE: IF RETURN FLIGHT ON MI 802 LITCHFIELD NATIONAL PARK WILL CONDUCT ON DAY 02



DARWIN & KAKADU NATIONAL PARK

TOUR REF: 5D-4N PAK/SG/14/2145/2608

VALIDITY: 01OCTOBER 2014-31MARCH 2015

VALIDITY 01 OCT 2014-31 MAR 2015	5 Days – 4 Nights DARWIN					
	TWIN	TRIPLE	CHD + 1 ADULT	CHD W/BED	CHD N/BED	SGL SUB
DARWIN CENTRAL HOTEL	AUD1171	AUD1107	AUD1004	AUD838	AUD726	AUD490
TRAVELODGE MIRAMBEENA RESORT	AUD1171	AUD1094	AUD1004	AUD838	AUD726	AUD490
MANTRA ON THE ESPLANADE DARWIN	AUD1249	AUD1120	AUD1071	AUD893	AUD774	AUD449
NOVOTEL ATRIUM DARWIN	AUD1281	AUD1193	AUD1098	AUD915	AUD792	AUD520
MANTRA PANDANAS	AUD1324	AUD1210	AUD1135	AUD945	AUD819	AUD524
HILTON DARWIN	AUD1475	AUD1337	AUD1263	AUD1050	AUD909	AUD714

PACKAGE PRICE INCLUDES: (5Days-4Nights)

- > 4Nights Hotel Accommodations
3Nights Darwin & 1Night Kakadu National Park
- > Daily Breakfast & other meals as indicated
- > Sightseeing Tours as indicated
- > Admission fees where applicable
- ◆ Return Airport SIC Shuttle Transfer

NOTE: IF RETURN FLIGHT ON MI 802 LITCHFIELD NATIONAL PARK WILL CONDUCT ON DAY 02



TERMS & CONDITIONS

RATES & PAYMENT TERMS

- * Rates validity AS STATED
- * All rates quoted in AUSTRALIAN DOLLARS & inclusive of Australian GST (Goods & Services Tax).
- * Child rates apply for children aged from 2 to 11 yrs. inclusive
- * Extra person rates will be applicable for over the minimum pax size (min 2 pax) regardless of age
- * All rates are NETT inclusive of service charge, tax & are non-commissionable unless otherwise specified (excludes Airfares & Airport Taxes)
- * Please use "DARWIN HOTEL TARIFF NETT WHOLESALE RATES" for EXTENSION NIGHT STAYS
- * All rates & tour itineraries (where applicable) are SUBJECT TO CHANGE WITHOUT NOTICE

CONFIRMATION OF PACKAGE

- * Confirmation of package is subject to Hotel availability (Rooms are on a "RUN OF HOUSE" basis unless otherwise stated) & SIT-IN-COACH (SIC) Tour(s), where applicable to package, is subject to MINIMUM NUMBERS to operate
- * Surcharge rates & minimum nights stay may be applicable for Hotel's BLOCKOUT DATES (to be advised at a later date)
- * Porterage & Tipping are not included
- * All tours & Airport transfers are on SIT-IN-COACH (SIC) basis only
- In the event that a chosen tour is not operated due to unforeseen circumstances, we reserve the right to offer pax an ALTERNATIVE REPLACEMENT TOUR

CANCELLATION & REFUND POLICY

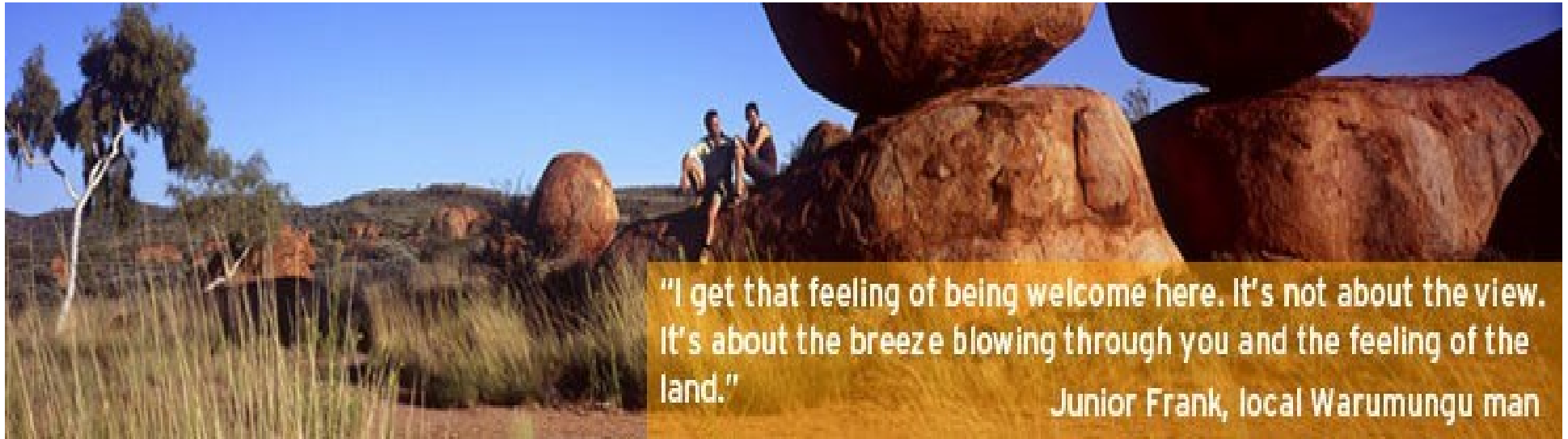
- * Cancellation of package:
 - Less than 72 HRS will incur 75% charge of TOUR PRICE
 - Less than 48-HOURS / NO-SHOW will incur 100% charge of TOUR PRICE
 - After commencement of travel, NO REFUND in part or full will be given to unutilized services

AMENDMENT POLICY

- * Due to the very competitive nature of rates, we will accept a MAXIMUM of 3 (THREE) Amendments per booking to be received beyond 72 hours of reservation. Any additional amendments will incur AUD5.00 SERVICE FEE PER AMENDMENT. Amendments received less than 72 hours may incur cancellation charges.

EXCLUSION OF LIABILITY

- * Ipoh Golden Dragon Tour Sdn Bhd acts only as an agent for carriers, transportation companies, hotels & other contractors and will, therefore, disclaim responsibility for any loss, damages, accidents, change of schedule or other irregularities caused or arising from circumstances beyond our control. We also reserve the right to change the itinerary with or without notice if found in the best interest of all concerned.



"I get that feeling of being welcome here. It's not about the view. It's about the breeze blowing through you and the feeling of the land."
Junior Frank, local Warumungu man

For enquiry or booking, please contact:

IPOH GOLDEN DRAGON TOUR SDN BHD

TEL: 05-2551150

Fax: 05-2559311

Email: ipohgoldendragon@gmail.com

Terms & Conditions apply